


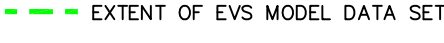
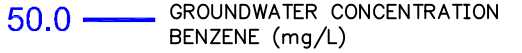
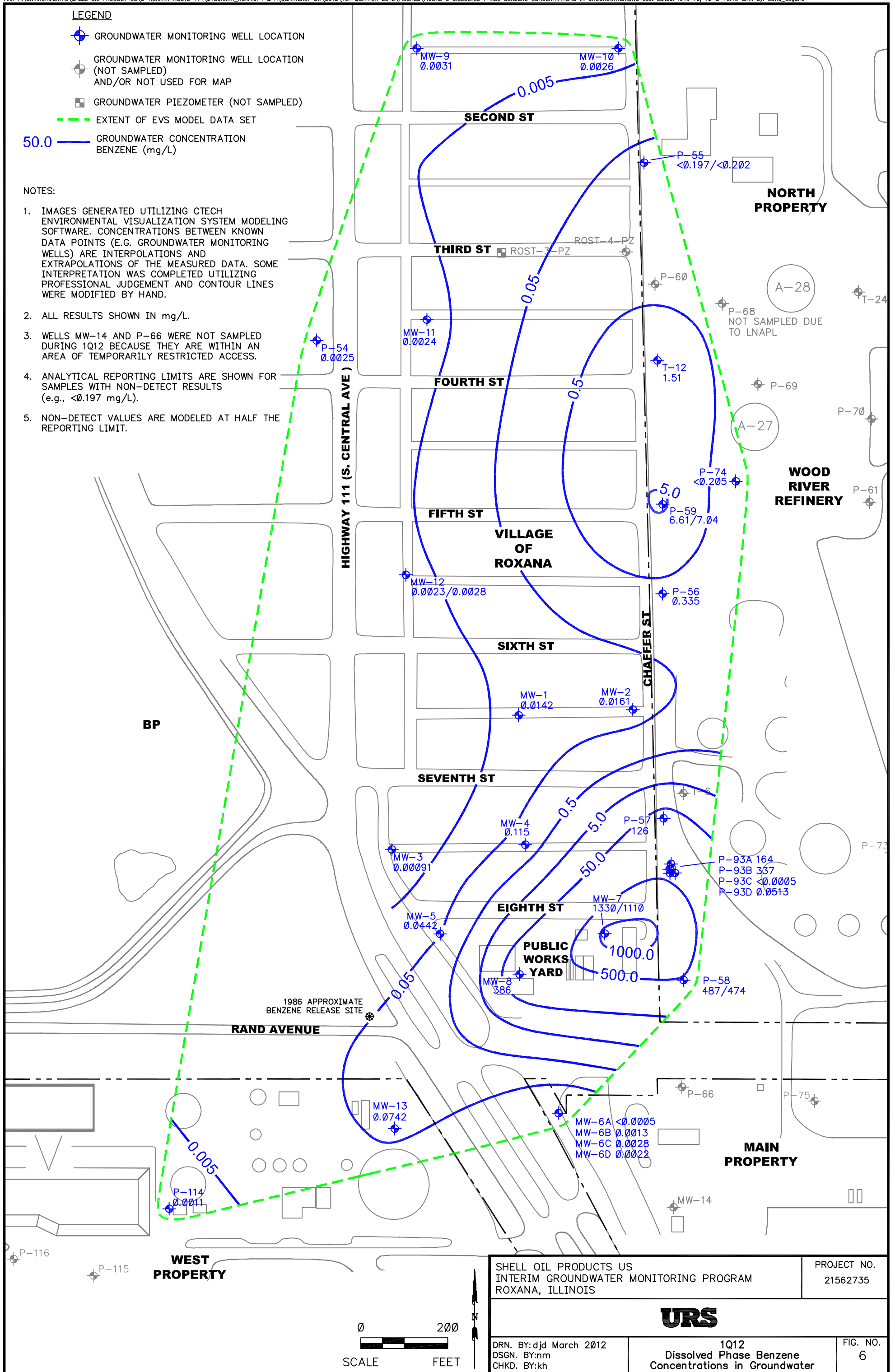


**LEGEND**

-  GROUNDWATER MONITORING WELL LOCATION
-  GROUNDWATER MONITORING WELL LOCATION (NOT SAMPLED) AND/OR NOT USED FOR MAP
-  GROUNDWATER PIEZOMETER (NOT SAMPLED)
-  EXTENT OF EVS MODEL DATA SET
-  50.0 — GROUNDWATER CONCENTRATION BENZENE (mg/L)

**NOTES:**

1. IMAGES GENERATED UTILIZING CTECH ENVIRONMENTAL VISUALIZATION SYSTEM MODELING SOFTWARE. CONCENTRATIONS BETWEEN KNOWN DATA POINTS (E.G. GROUNDWATER MONITORING WELLS) ARE INTERPOLATIONS AND EXTRAPOLATIONS OF THE MEASURED DATA. SOME INTERPRETATION WAS COMPLETED UTILIZING PROFESSIONAL JUDGEMENT AND CONTOUR LINES WERE MODIFIED BY HAND.
2. ALL RESULTS SHOWN IN mg/L.
3. WELLS MW-14 AND P-66 WERE NOT SAMPLED DURING 1Q12 BECAUSE THEY ARE WITHIN AN AREA OF TEMPORARILY RESTRICTED ACCESS.
4. ANALYTICAL REPORTING LIMITS ARE SHOWN FOR SAMPLES WITH NON-DETECT RESULTS (e.g., <math>\leq 0.197</math> mg/L).
5. NON-DETECT VALUES ARE MODELED AT HALF THE REPORTING LIMIT.



SHELL OIL PRODUCTS US INTERIM GROUNDWATER MONITORING PROGRAM ROXANA, ILLINOIS		PROJECT NO. 21562735
<b>URS</b>		
DRN. BY: djd March 2012 DSGN. BY: nm CHKD. BY: kh	1Q12 Dissolved Phase Benzene Concentrations in Groundwater	FIG. NO. 6

